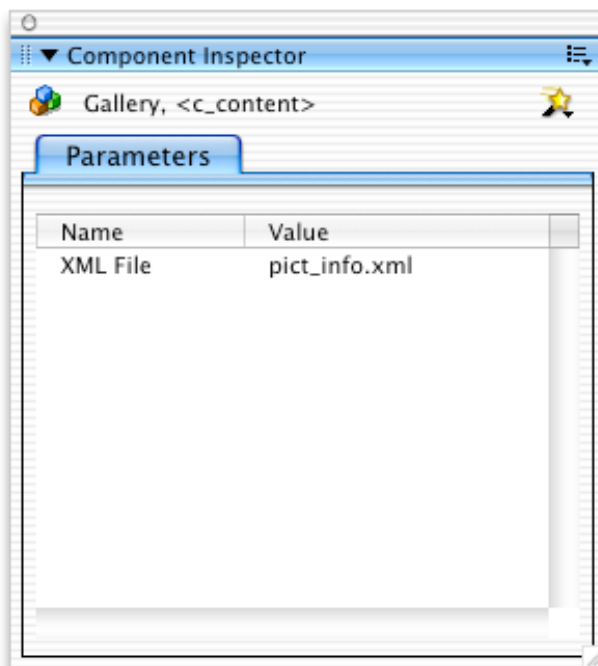


Gallery Component



The Gallery Component allows a user to browse through thumbnail images, then click on the images if they wish to enlarge them.

The file names, titles, and captions for the pictures are read out of an XML file



The only option for input in the component inspector is **XML File**. This controls which XML file the component reads the picture data out of

File information is read out of the XML in a certain format:

```
<portfolio name = "second portfolio">  
  <pict pictname = "Picture 8" file = "pict8" pictcaption = "pict caption 8"></pict>  
  <pict pictname = "Picture 9" file = "pict9" pictcaption = "pict caption 9"></pict>  
  <pict pictname = "Picture 10" file = "pict10" pictcaption = "pict caption 10"></pict>  
</portfolio>
```

portfolio name is the portfolio title which appears on the portfolio bar. Up to four portfolios may be included by adding additional sets of portfolio tags.

pictname is the title of the picture which appears when it is clicked.

file is the path to the picture files. There should be a corresponding enlarged picture in the “pictures” folder (up to 450 x 350 pixels), and a corresponding thumbnail (up to 90 pixels wide) in the “thumbnails” folder. .swf and .jpg files can be loaded.

The pictures folder and the thumbnails folder should be stored on the same level as the HTML file in which the SWF file is used.

pictcaption is the 2-line caption which appears below the picture title when the picture is clipped.

Settings

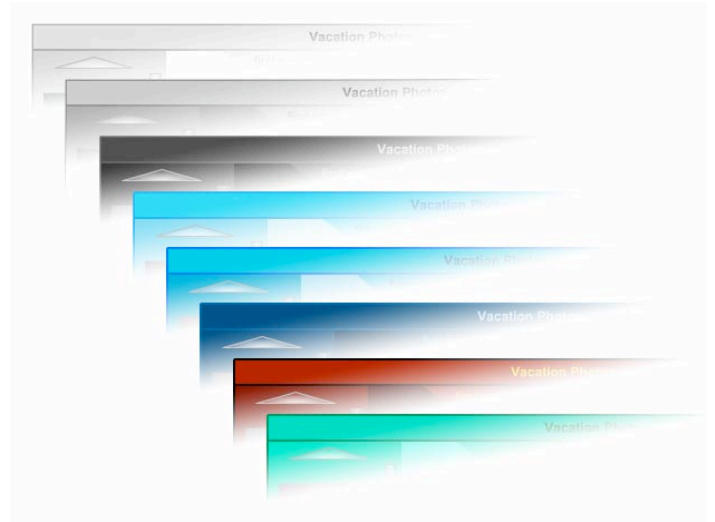
The Gallery Component allows a number of settings to be inputted into the XML file through the settings tag:

```
<settings  
  g_title = "Vacation Photos"  
  colorscheme = "grey"  
  bgtransparent = "false"  
>/settings>
```

g_title is the title that appears at the top of the gallery.

bgtransparent dictates whether the background color of the SWF can show through ("true") or not ("false").

colorscheme dictates the colors of the gallery. Possible values are "white", "grey", "black", "lightblue", "blue", "darkblue", "red", and "green".



Color options can also be manually configured through seven additional color parameters:

```
<settings  
  g_title = "Vacation Photos"  
  colorscheme = "grey"  
  bgtransparent = "false"  
  top_bar = "0x111111"  
  portfolio_bar = "0x333333"  
  outline = "0x000000"  
  thumbnail_bar = "0x666666"  
  text1 = "0xFFFFFFFF"  
  text2 = "0xDDDDDD"  
  bg = "0xAFFFFFFF "  
>/settings>
```

When entered, these settings override the color scheme options. None, some, or all of these options may be used.